

Begining at a Hickory on  
the bank of Tus<sup>a</sup> Creek

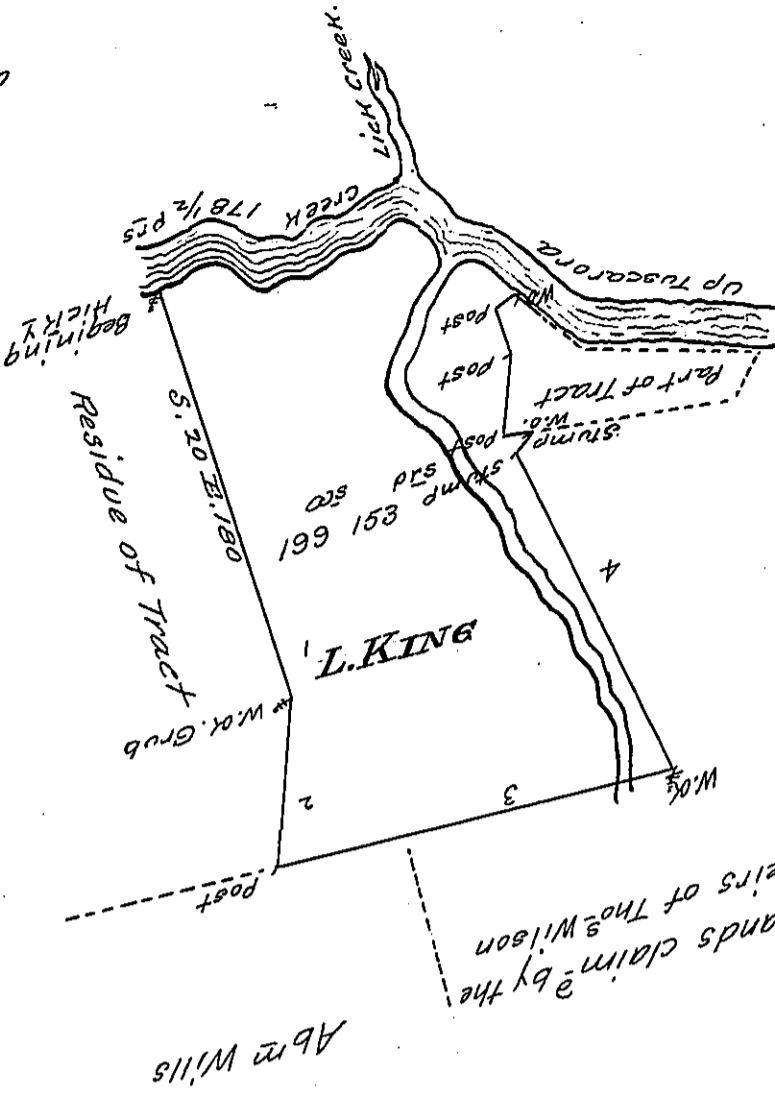
Course & Distances

- 1. S 20 E. 180 a W.O. Grub
- 2. S 2 W. 69 Post.
- 3. N. 75 E. 178 W.O.
- 4. N. 30 W. 153 a Stump
- 5. N. 37 E. 14 W.O. stump
- 6. S. 78 W. 14 a Post
- 7. N. 1 E. 31 3/4 Post
- 8. N. 12 1/2 W. 24 Post
- 9. N. 66 E. 6 a W.O.

on bank Tus<sup>a</sup> Creek  
thence up the same

- N. 57 W. 57 1/2
- S. 47 W. 43
- S. 62 W. 20
- N. 46 W. 14
- S. 84 W. 30
- S. 57 W. 14

Total up Creek 178 1/2 p<sup>rs</sup>



Draught of one Hundred and Ninety nine acres and 153 perches  
and the allowance of six p<sup>rs</sup> Cent for Roads &c.

Part of a Larger Tract of Land situate in Milford Towns-  
hip (formerly Cumberland now) Mifflin County survey<sup>d</sup> the 6<sup>th</sup> day of  
June 1763 and said to contain 431 3/4 acres &c allow<sup>ee</sup> In pursuance of  
two ~~Warrants~~ Warrant's one in the name of Richard Franklin the 4<sup>th</sup>  
day of February 1755 and the other in the name of John Hunter dat-  
ed the 1<sup>st</sup> day of April 1755.

Divided the 11<sup>th</sup> Day of April 1801.

Note: the above 199<sup>as</sup> 153<sup>ps</sup> is also a part of 219<sup>as</sup> 83<sup>ps</sup> &c. now the Property  
of Laurance King

To Samuel Cochran, Esq<sup>r</sup>.

P William Harris, D.S.

Surv<sup>r</sup>. Gen<sup>l</sup>. of Pennsylvania.

IN TESTIMONY that the above is a copy of the original remaining on file in  
the Department of Internal Affairs of Pennsylvania, made  
conformably to an Act of Assembly approved the 16<sup>th</sup> day of  
February, 1833, I have hereunto set my Hand and caused  
the Seal of said Department to be affixed at Harrisburg,  
this twentieth day of June 1906

*Loae P. Brown*  
Secretary of Internal Affairs.